

Bixby Village

Bixby Village

Bixby Village offers a wide range of floor plans to meet various living needs. Whether you are looking for a spacious home for a growing family or a cozy retreat for a smaller household, you can find a floor plan that suits your needs. With sizes ranging from 1,800 to 2,894 square feet, these homes provide ample space to accommodate your lifestyle. You can choose from three to five bedrooms and two to three bathrooms. With so many options available, you can easily find your perfect home at Bixby Village.

Build your forever home

We firmly believe the process of building and buying a home is a partnership that should be exciting, inspiring and most importantly, fun! When building a home, you'll have regular check-ins with your onsite team and we'll ensure your questions are always answered and needs are always met.



Floor Plan Specifications

We offer a wide array of new construction floor plans. Many of our plans can be modified to offer everything from extra bedrooms and bathrooms to beautiful back patios.

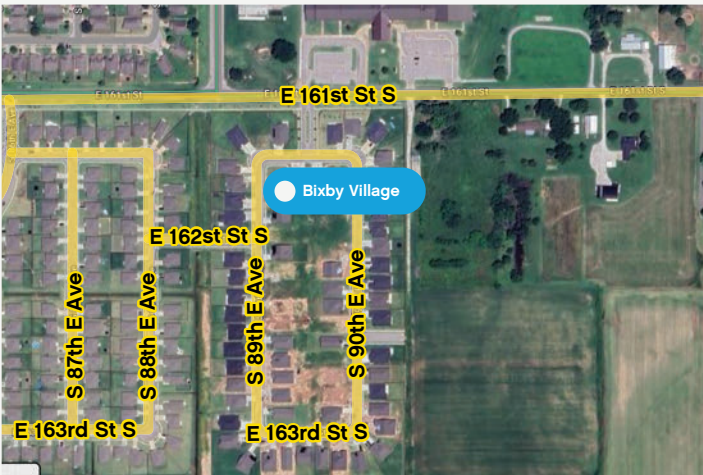
Homeowners can enjoy:

- Top rated schools
- Walking trails
- Playground
- Splash Pad
- Easy access to highways, shopping and restaurants



Community with access

This community has access to everything you need, from unique local hotspots to large retail stores such as Costco and Target. With access to nearby shopping centers and an excellent cost of living, Bixby is quickly becoming a thriving suburb of Tulsa and a desirable place to live and build your new home. Only 25 minutes from Downtown Tulsa!



Making the process easy

We take great pride in helping our home buyers navigate this exciting new journey. The best part? The home building process is easier than you think, and we're here to prove it with a friendly smile and helpful attitude.

Bixby Village

For more information:

Bryon Stevens

(918) 804 8333

bryon.stevens@capitalhomes.com

